

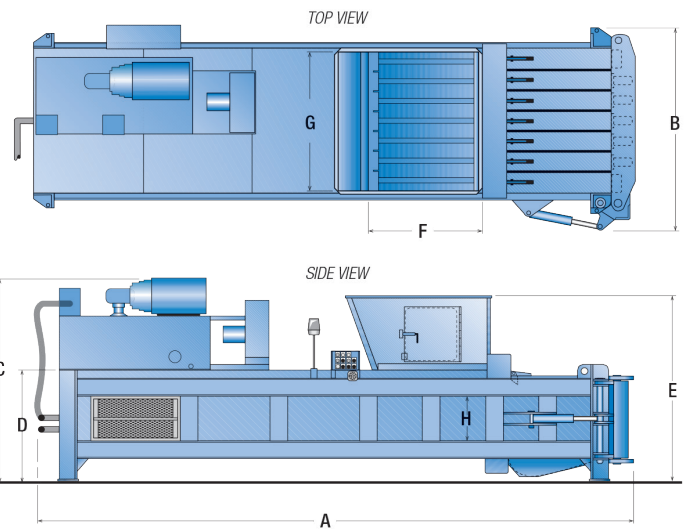
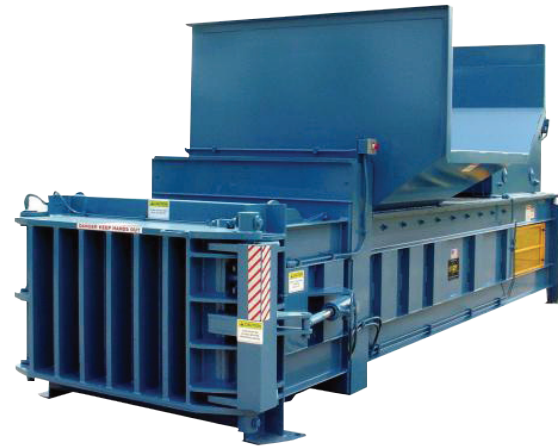
HORIZONTAL BALERS

Atlas® ET



Dimensions and Specifications

Specifications		
Nominal Bale Size (W x H x L)	60" x 30" x 48"	1524mm x 762mm x 1219mm
Clear-Top Opening (L x W)	45" x 56"	1143mm x 1422mm
Unit Weight (dry)	28,000 lbs.	12701 kg
Performance Characteristics		
System Pressure	2,800 psi	193 bar
Platen Force	219,900 lbs.	978 kN
Platen Pressure	139 psi	958 kPa
Cycle Time (partial penetration)	22 seconds	
Electrical Equipment		
Electric Motor 3/60/230-460	50 hp	37 kW
Electric Control Voltage	120 VAC	
Hydraulic Equipment		
Pump Type	Vane	
Pump Capacity	94 gpm	356 lpm
Reservoir	200 gal.	757 L
Hydraulic Cylinder(s)	1	
Bore	10"	254mm
Rod	7"	178mm
Stroke	96"	2438mm



Dimensions	(A) Overall Length	(B) Overall Width	(C) Overall Height	(D) Body Height	(E) Feed Height	(F) Charge Box Length	(G) Charge Box Width	(H) Charge Box Height	Clear Top Opening (L x W)
Atlas® ET	22' 10" (6960mm)	7' (2134mm)	93 3/4" (2381mm)	48 1/2" (1232mm)	6'-8" (2032mm)	45" (1143mm)	60" (1524mm)	29" (737mm)	45" x 56" (1143mm x 1422mm)

Pictures and mechanical diagrams in this literature are illustrative only and may not be to scale. Specifications are subject to change without notice in order to accommodate improvements to the equipment. Certified in compliance with ANSI standard Z245.2 and all applicable OSHA Regulations. Products must be used only by trained operators in accordance with the Operator Manual, as well as applicable regulations, laws, and ANSI standards.

We're Here To Help!

For detailed specifications, recommendations, or to request a site survey comparing various systems, contact the Marathon® Sales Team at MarathonSales@MarathonEquipment.com

Authorized Dealer:



Sourcewell

Awarded Contract

Contract # 040621-MEC

Marathon Equipment Company | P.O. Box 1798 | Vernon, AL 35592-1798

Learn more about Marathon Equipment: 800.633.8974 | www.marathonequipment.com